

TRUSTED SINCE 1926

BONIDE[®]

Bon-Neem II

Fungicide • Miticide • Insecticide

Concentrate



For control of insects, diseases & mites
on vegetables, fruits, nuts, herbs, spices, roses,
flowers & shrubs around the home

Can be used up to day of harvest

ACTIVE INGREDIENTS:

Pyrethrins	0.25%
Piperonyl Butoxide*	2.50%
Clarified Hydrophobic Extract of Neem Oil	70.00%

OTHER INGREDIENTS: 27.25%

TOTAL 100.00%

*(butyl carbityl) (6-propylpiperonyl)ether
and related compounds

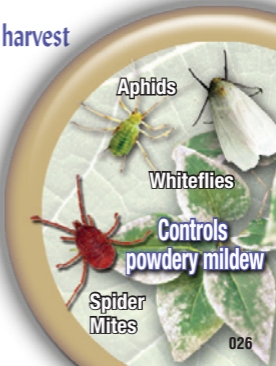
EPA Est No. 4-NY-1

EPA Reg. No. 70051-75-4

Keep Out Of Reach Of Children

CAUTION (See Back Panel for Additional
Precautionary Statements)

Net Contents 8 FL.OZ. (236.5 ML)



BON-NEEM^{II} FUNGICIDE · MITICIDE · INSECTICIDE CONCENTRATE

- Broad Spectrum Insecticide, Fungicide, and Miticide
- Stops Powdery Mildew
- Can Be Used Up To Day Of Harvest

EPA Est. No. 4-NY-1
EPA Reg. No. 70051-75-4

Buyers Guarantee Limited to Label Claims.
©Bonide Products, Inc. All Rights Reserved

Distributed by
Bonide Products, Inc.
6301 Sutliff Road
Oriskany, NY 13424



0
8 fl. oz.

6

DIRECTIONS FOR USE

It is a violation of Federal law to use this product in a manner inconsistent with its labeling.

GENERAL INFORMATION

SHAKE WELL BEFORE AND DURING USE.

Multi-purpose insecticide/fungicide/miticide. Kills eggs, larval and adult stages of insects. Prevents fungal attack of plants' tissues. Not for use in food handling areas. This product is most effective when applied in early to mid-morning or late afternoon when adult insect pests, such as whiteflies, are normally sedentary on the undersides of the foliage. Use spray solutions within several hours of preparation for maximum effectiveness. For best results maintain constant agitation in spray equipment. For optimal performance, do not mix with cold water or apply under cold ambient temperatures (less than 45°F). If product thickens (freezes) before using, place in a warm room (greater than 45°F) for a few days or in warm water (120°F) for 2 to 8 hours until completely thawed. Do not use partially thawed material. Do not apply to wilted or otherwise stressed plants, or to newly transplanted material prior to root establishment. When using in conjunction with beneficial insects, conduct a small trial to assure compatibility before using on a large scale. As with other products that contain oils, exercise care in timing applications to early morning/late evening to minimize the potential for leaf burn. Do not add adjuvants (spreaders, stickers, extenders, etc.) to this product. Use with care on plants with tender tissue. Do not apply to known spray sensitive plant species such as: impatiens flowers, fuchsia flowers, hibiscus flowers, some rose flowers, ornamental olive trees, red maples, some carnation varieties or similar plants without prior testing.

FUNGICIDE USE

For use on FRUITS, NUTS, VEGETABLES, HERBS, SPICES, ROSES, HOUSEPLANTS, FLOWERS, and SHRUBS

Application Instructions: This product is an effective fungicide for the prevention and control of various fungal diseases including powdery mildew, black spot, brown spot, dollar spot, snow mold, downy mildew, anthracnose, rust, leaf spot, botrytis, needle rust, scab and flower, twig and tip blight. As a preventative, apply this product on a 7 to 14 day schedule until the potential for disease development is no longer present. To control disease already present, apply this product on a 7 day schedule until disease pressure is eliminated. Then continue spraying on a 14 day schedule to prevent the disease from recurring. To prevent rust leaf spot diseases, anthracnose and scab, begin applications at the first sign of spring budding. To prevent powdery mildew, apply in mid-summer or when disease is first detected. For brown patch and dollar spot, begin spraying at first sign of disease on a 7 to 14 day interval. For snow mold, begin spraying on a 14 day interval in the fall before the first snow. Continue applications until disease pressure no longer exists.

Mixing Instructions: Mix this product at the rate of 2 tablespoons (1 fluid ounce) per gallon of water. Thoroughly mix solution and spray all plant leaf surfaces (including undersides of leaves) until completely wet. Excessive application is unnecessary and to be avoided.

INSECTICIDE USE

For use on FRUITS, NUTS, VEGETABLES, HERBS, SPICES, ROSES, HOUSEPLANTS, FLOWERS, and SHRUBS

Application Instructions: Apply this product at first sign of insects/mites. This product provides for a quicker and more complete control, and acts as an "exciter" to flush insect pests out of hiding and into direct contact with spray residues. For control of aphids, spider mites, scales, mealybugs, whiteflies, beetles, loopers, leafminers, leafrollers, armyworms, webworms, weevils, tent caterpillars, fungus gnats, leafhoppers, cabbageworms, squash bugs, squash vine borer, stink bugs, thrips, tomato hornworm, lace bugs, boxelder bugs, grasshoppers, crickets, ants, fleas, ticks, earwigs, cockroaches, mosquitoes, chinch bugs, chiggers and many other insect pests. This product is most effective when applied on a 7 to 14 day schedule. For heavy insect populations, spray on a 7 day schedule.

Mixing Instructions: Mix this product at the rate of 2 tablespoons (1 fluid ounce) per gallon of water. Thoroughly mix solution and spray all plant leaf surfaces (including undersides of leaves) until completely wet. Excessive application is unnecessary and to be avoided. Frequently agitate solution as you spray.

USE RESTRICTIONS

Entry Restrictions

Do not allow adults, children or pets to enter the treated area until sprays have dried.

Application Restriction

Do not apply this product in a way that will contact adults, children or pets, either directly or through drift. Remove pets, birds, and cover fish aquariums before spraying.

Not for use in outdoor residential misting systems.

Do not make applications during rain.

Do not wet plants to point of runoff or drip.

STORAGE AND DISPOSAL

Pesticide Storage: Do not store diluted solutions for later use.

Pesticide Disposal and Container Handling:

Nonrefillable container. Do not reuse or refill this container. *If empty-* Place in trash or offer for recycling if available. *If partly filled-* Call your local solid waste agency for disposal instructions. Never place unused product down any indoor or outdoor drain.

FIRST AID

If inhaled:	<ul style="list-style-type: none">• Move the person to fresh air.• If person is not breathing, call 911 or an ambulance, then give artificial respiration, preferably by mouth-to-mouth, if possible.• Call a poison control center or doctor for further treatment advice.
If on skin or clothing:	<ul style="list-style-type: none">• Take off contaminated clothing.• Rinse skin immediately with plenty of water for 15-20 minutes.• Call a poison control center or doctor for treatment advice.
If in eyes:	<ul style="list-style-type: none">• Hold eye open and rinse slowly and gently with water for 15-20 minutes.• Remove contact lenses, if present, after the first 5 minutes, then continue rinsing eye.• Call a poison control center or doctor for treatment advice.
If swallowed:	<ul style="list-style-type: none">• Call a poison control center or doctor immediately for treatment advice.• Have person sip a glass of water if able to swallow.• Do not induce vomiting unless told to do so by a poison control center or doctor.• Do not give anything by mouth to an unconscious person.

Hot Line Number: 1-800-858-7378. Have the product container or label with you when calling a poison control center or doctor, or going for treatment.

PRECAUTIONARY STATEMENTS

HAZARDS TO HUMANS AND DOMESTIC ANIMALS

CAUTION - Harmful if inhaled. Avoid breathing vapor or spray mist. Prolonged or frequently repeated skin contact may cause allergic reactions in some individuals. Remove and wash contaminated clothing before reuse. Wash thoroughly with soap and water after handling and before eating, drinking, chewing gum, using tobacco or using the toilet.

ENVIRONMENTAL HAZARDS

This pesticide is toxic to aquatic organisms including fish and invertebrates. To protect the environment, do not allow pesticide to enter or run off into storm drains, drainage ditches, gutters or surface waters. Applying this product in calm weather when rain is not predicted for the next 24 hours will help to ensure that wind or rain does not blow or wash pesticide off the treatment area. Rinsing application equipment over the treated area will help avoid runoff to water bodies or drainage systems.

BEE HAZARD

This product is highly toxic to bees exposed to direct treatment on blooming crops or weeds. Do not apply this product or allow it to drift to blooming crops or weeds while bees are actively visiting the treatment area.

PHYSICAL AND CHEMICAL HAZARDS

Do not use or store near heat or open flame.

Seller warrants that this product complies with the specifications expressed in this label. To the extent consistent with applicable law, Seller makes no other warranties, and disclaims all other warranties, express or implied, including but not limited to warranties of merchantability and fitness for the intended purpose. To the extent consistent with applicable law, Seller's liability or default, breach or failure under this label shall be limited to the amount of the purchase price. To the extent consistent with applicable law, Seller shall have no liability for consequential damages.