

**TERMITES, CARPENTER ANTS AND CARPENTER BEES:** Apply to voids or channels in damaged wood members of a structure; to cracks, spaces or bearing joints between wooden members of a structure; or between such members and the foundation; and in locations vulnerable to termite attack. This dust can be applied in attics and crawl spaces to prevent entry of drywood and formosan termites at a rate of 0.5 lb per 1000 square feet of floor area. In these treatments, all vents and blowers should be closed. Inspect at 6 months and one year to ensure that colony has been killed. Retreat if necessary.

The purpose of such applications of Bonide Termite & Carpenter Ant Dust is to kill workers or winged forms which may be present in the treated channels at the time of treatment. Such applications are not a substitute for mechanical alteration, soil treatment or foundation treatment but merely a supplement. For active termite infestations, get a professional inspection.

**WASP AND BEES:** It is generally advisable to treat wasp and bee nests in the evening when insects are less active and have returned to the nest. Wear protective clothing if deemed necessary to avoid stings. Using hand or power duster (Actisol® or similar equipment) or other suitable means, with extension tubes if necessary, thoroughly dust nest, entrance and surrounding areas where insects alight. Nests in wall voids can be located by listening with your ear against the wall. Drill a hole in the area, blow dust in and reseat. For ground wasps, dust entrance and surrounding areas. For best results check nests carefully one or two days after treatment to ensure complete kill, then remove and destroy nest to prevent emergence of newly-hatched insects. If removal is not feasible, retreat the nest, if necessary. Do not use this product to treat overhead nests.

**OUTDOOR USE**

**PERIMETER TREATMENT:** Use as a residual treatment for control of ants, bees, centipedes, cockroaches, crickets, firebrats, fleas, ground beetles, millipedes, scorpions, silverfish, slugs, sowbugs, spiders, ticks and wasps. Make a residual treatment around windows and doors, porches, screens, eaves, patios, garages, under stairways, in crawl spaces and other areas where pests hide. To help prevent the invasion of buildings and structures by the pests, apply thoroughly and uniformly to the foundation and crawl spaces where pests are active and may find entrance.

For information on pesticide products (including health concerns, medical emergencies, or pesticide incidents), call the National Pesticide Telecommunications Network at 1-800-858-7378.

Notice: Buyer assumes all responsibility for safety and use not in accordance with directions.



**BONIDE Termite & Carpenter Ant Dust**

**PRECAUTIONARY STATEMENTS**  
**Hazards to Humans & Domestic Animals**  
**CAUTION**

May be harmful if absorbed through skin. Avoid contact with skin, eyes or clothing. Wash thoroughly with soap and water after handling.

**ENVIRONMENTAL HAZARDS**

This product is extremely toxic to fish and aquatic invertebrates. Do not apply directly to water. Use with care when applying in areas adjacent to any body of water. Do not contaminate water when disposing of equipment washwater.

**FIRST AID**

Have the product container or label with you when calling a poison control center or doctor, or going for treatment.

If on skin or clothing	Take off contaminated clothing. Rinse skin immediately with plenty of water for 15-20 minutes. Call a poison control center or doctor for treatment advice.
------------------------	-------------------------------------------------------------------------------------------------------------------------------------------------------------

**STORAGE AND DISPOSAL**

**Storage:** Store and transport in an upright position. Store product in original container in a cool, dry, locked place out of the reach of children.

**Disposal:** If empty - Do not reuse this container. Place in trash or offer for recycling, if available. If partially filled - Call your local solid waste agency for disposal instructions. Never place unused product down any indoor or outdoor drain.

**DIRECTIONS FOR USE**

It is a violation of Federal law to use this product in a manner inconsistent with its labeling.

**IMPORTANT:** Read the entire Directions for Use, Precautions and Disclaimer of Warranties before using this product. Bonide Termite & Carpenter Ant Dust is a ready-to-use insecticide dust, which exhibits effective knockdown and long-lasting control against the pests listed when used according to label directions.

Bonide Termite & Carpenter Ant Dust can be used for long-lasting pest control in and around homes and their immediate surroundings. Permitted areas of use include but are not limited to:

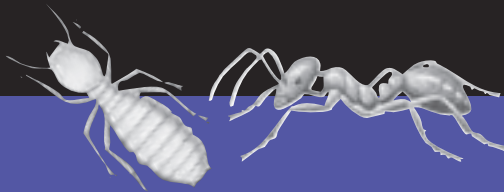
- houses
- animal quarters
- apartments
- household greenhouses
- ornamentals
- mobile homes and recreational vehicles

Bonide Termite & Carpenter Ant Dust is intended for applications with a hand duster or from the shaker can, with a paintbrush or by other suitable means, to hiding and runway areas and other places where insects are found.

**INDOOR USE**

In living areas, make applications in such a manner as to avoid deposits on exposed surfaces or introducing the material into the air. To apply insecticide directly into cracks and crevices, use a bulbous duster, or other suitable equipment. Apply lightly and uniformly to infested area. Pay particular attention to cracks and crevices; service ducts; false floors and ceilings; wall void; around electrical and telephone fittings and equipment; around water and sewer pipes; under and behind cabinets, refrigerators and sinks; around windows and doorframes; along baseboards; in attics and crawl spaces. The amount to be applied will vary with the site but usually be in the range of 2-3 grams of product per square yard (or 0.5 lbs. per 1000 square feet). Repeat as necessary to maintain adequate control.

# Termite & Carpenter Ant Dust



- Kills Termites, Carpenter Ants, and Carpenter Bees
- For Household Use

**ACTIVE INGREDIENTS**

Deltamethrin [(S)-alpha-cyano-3-phenoxybenzyl - (1R,3R)-3-(2,2-dibromovinyl)-2-dimethyl cyclopropanecarboxylate] ..... 0.05%

**INERT INGREDIENTS** ..... 99.95%

**TOTAL** ..... 100.00%

EPA Est. No. 4-NY-1 EPA Reg. No. 4-441

**KEEP OUT OF REACH OF CHILDREN**  
**CAUTION**

See Side Panel for Additional Precautionary Statements

**BONIDE PRODUCTS, INC.**  
**Oriskany, NY 13424**